



Vibrant pathways,
living landscapes,
active communities



Photo Credit: Kevin Godbey Photography

About the Kingston Land Trust

- > **Founded in 2008**
- > **An Urban Land Trust**
 - > Special focus on promoting the best and highest use of underutilized properties in Kingston and surrounding communities
- > **Key Programs/Initiatives**
 - > The Kingston Greenline
 - > Urban Agriculture
 - > General Open Space Protection
- > **Recent Successes**
 - > South Pine Street Farm enters 4th year
 - > Public/private partnerships for trails
 - > Nearing completion of first strategic plan

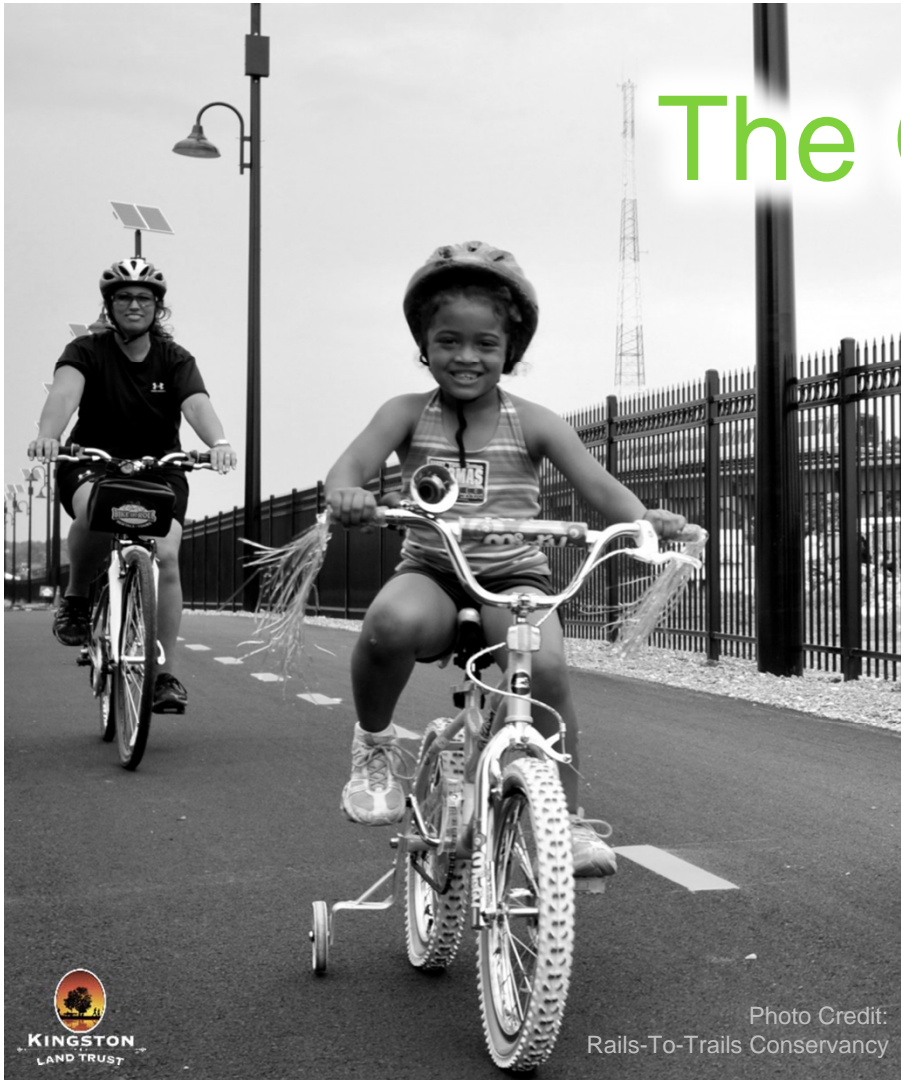


“Everybody needs beauty as well as bread, places to play in and pray in, where nature may heal and give strength to body and soul alike. ”

John Muir, *The Yosemite*



KINGSTON
LAND TRUST



The Greenline Vision

a network of *linear parks* and
complete streets that
connects
residents & visitors
to Kingston's rich
historical
cultural
recreational and
commercial resources.

Why Build the Greenline?

- > **For economic development**
trails generate economic activity, create jobs
- > **For public health benefits**
trails improve health, reduce obesity
- > **For mobility and social justice**
trails provide freedom and access to all
- > **For quality of life**
trails attract our city's next generation of civic leaders, entrepreneurs and artists

"If you build it, they will
come..."

Craig Della Penna, REALTOR®





A Growing Partnership



Witness Kingston's Renaissance

- > **Over 200 active volunteers in 2014**
 - > Rail trail committee, work days, hikes, management team
- > **Over \$4M in grant funding for design and construction**
 - > In partnership with the KLT, the City received CFA funds in 2014 for connectivity
 - > Ulster County
- > **Key projects already underway**
 - > Kingston Connectivity Project
 - > Building a Better Broadway
 - > Ulster County Rail Trail Project
 - > Comprehensive Greenline Management Plan



“A strategy of conserving parks and open space is not contrary to a community’s economic health, but rather an integral part of it.”

John L. Crompton, *The Proximate Principle*



A Regional Trail Hub



**Kingston Point
Rail Trail**



**Hudson River
Greenway Water
Trail**



**O&W Rail Trail/D&H
Canal Heritage
Corridor**



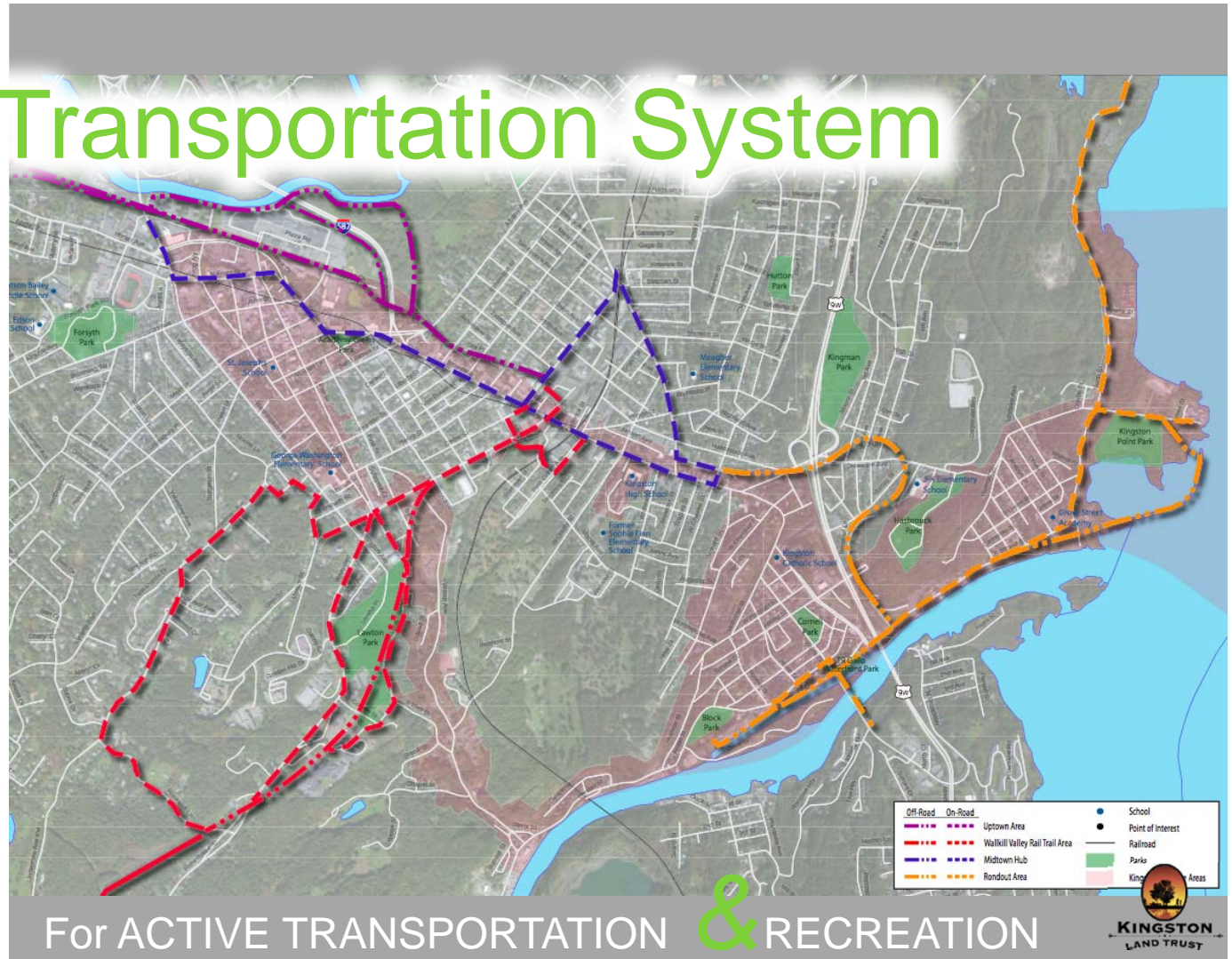
**Hudson Valley
Rail Trail &
Walkway Over the
Hudson**

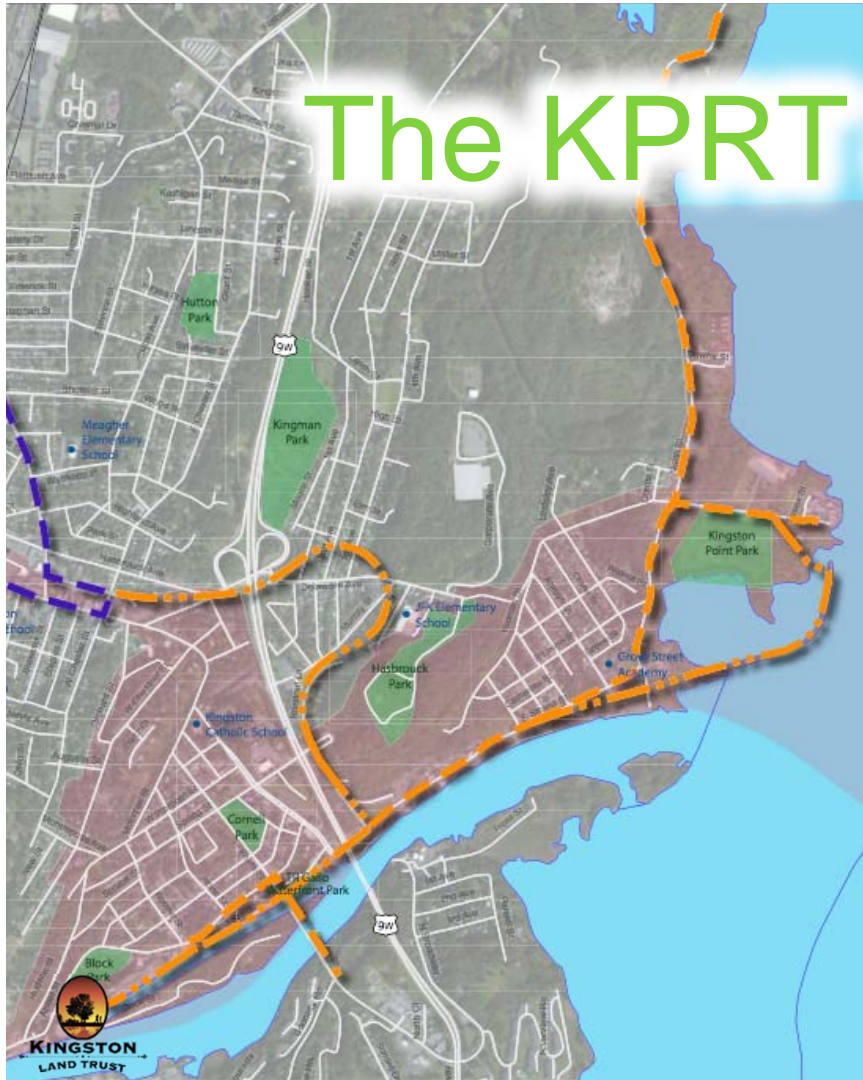


**Wallkill Valley Rail
Trail**

An Active Transportation System

- Radiates from the Midtown Hub
- to the Rondout and the Hudson
- to the Catskills and the Rondout Valley
- > to the Wallkill Valley and the Walkway





The KPRT & Rondout Section

- > Greenway got us started with support for the **Kingston Point Rail Trail Feasibility Study**
- > KLT entered into **partnership with the City** in 2014 to develop the trail from Midtown to the waterfront
- > Over **\$4M in-hand** to design and construct **7+ miles** of trails, promenades and complete streets connecting Midtown to the Rondout Creek and Hudson River
- > **Site preparation** began in 2014 with removal of rails and ties on upper segment
- > **Saratoga Associates team** hired for detailed design, toward **construction in early 2016**

The KPRT & Rondout Section

Midtown
Hub

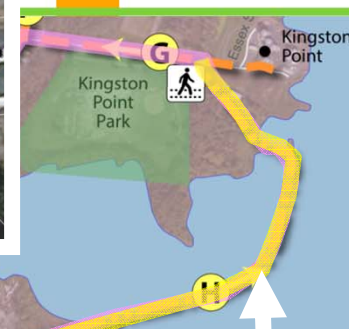
Kingston Greenline
Rondout Section

- Off-Street Trail
- Complete Streets

Delaware Ave
Pocket Park



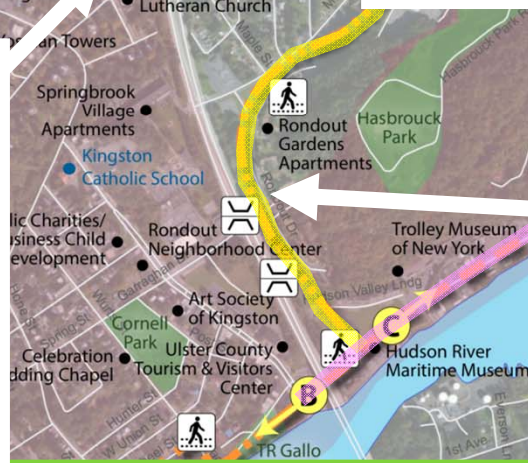
Hudson Landing Promenade



Kingston
Point



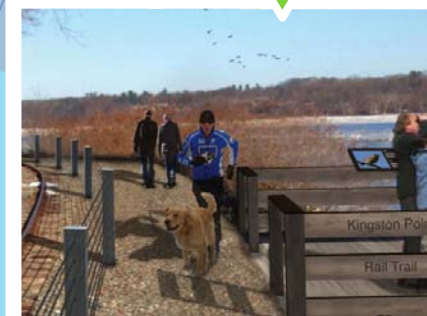
Hasbrouck Tunnel

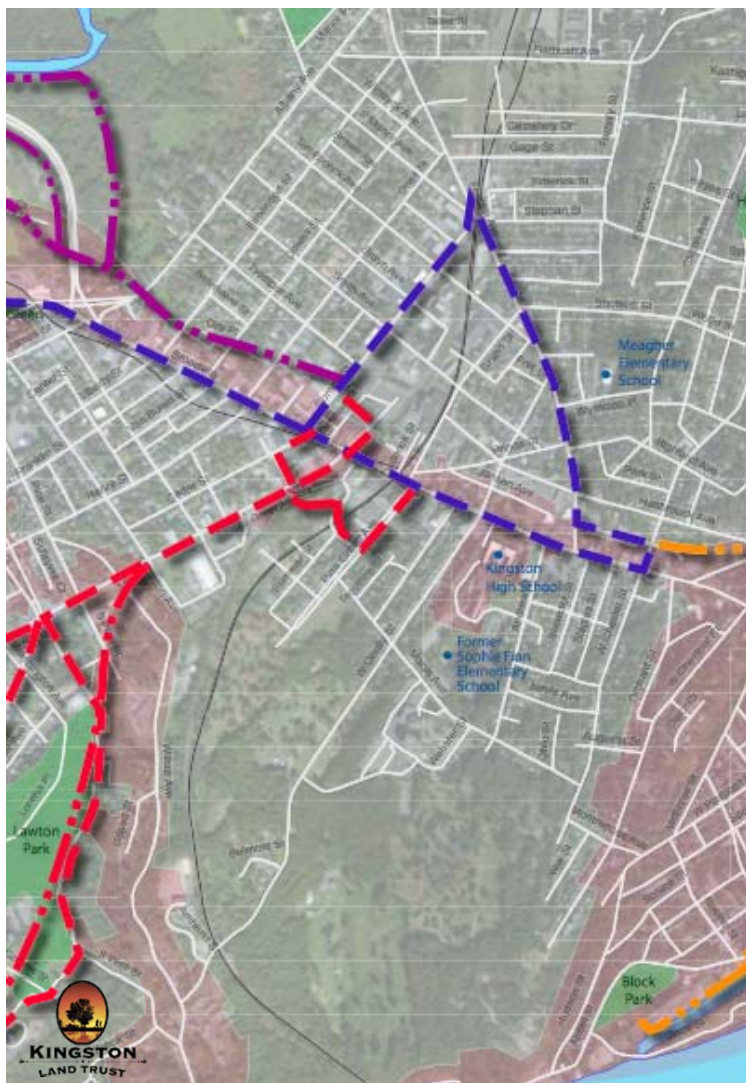


Block Park and
Rondout Promenade



Rondout Gardens



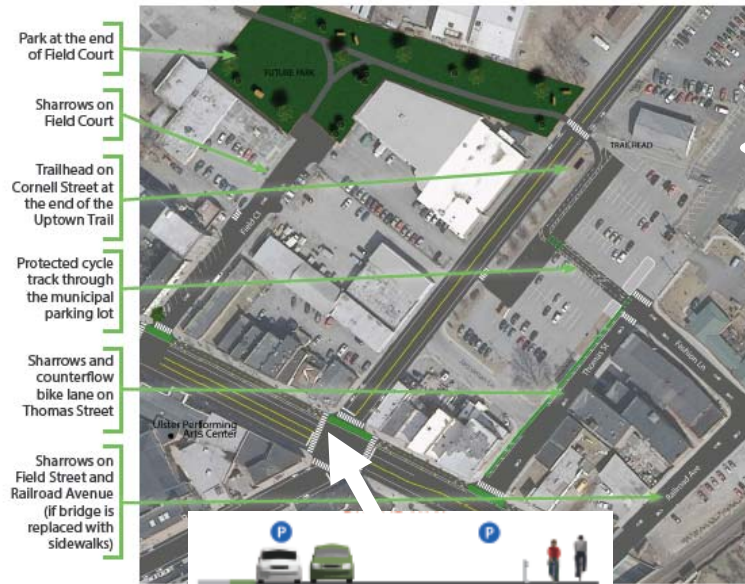


The Midtown Hub

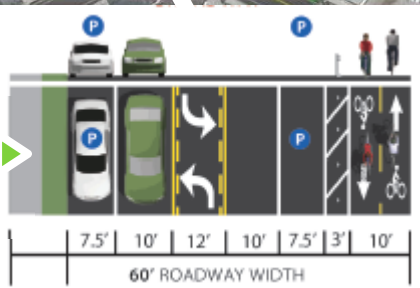
- > Ulster County Transportation Council & VHB nearing completion of **Building a Better Broadway** conceptual design
- > City of Kingston & GPI continue detailed design for Broadway, including **bike/ped improvements and signalization**
- > **Saratoga Associates team** study area covers off-broadway portion to Cornell Street
- > Gearing up for **public input sessions** in early Summer
- > Broadway work out to bid by **Fall 2016**

Uptown, O&W Rail Trail and
Ulster County Rail Trail

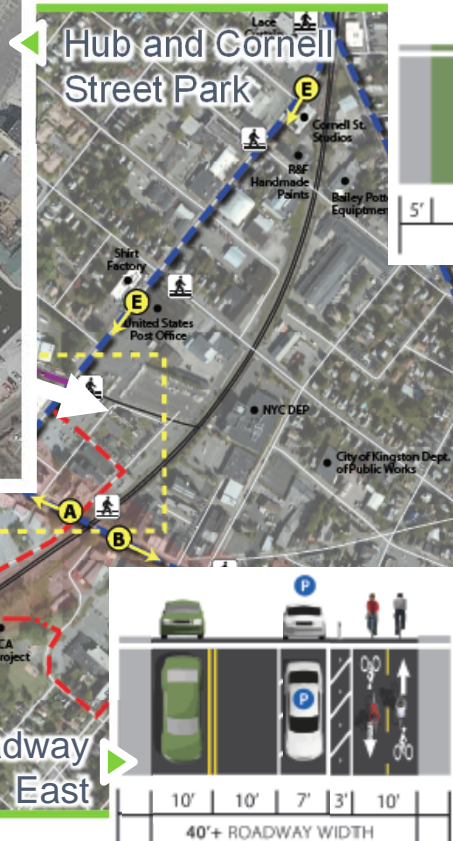
The Midtown Hub



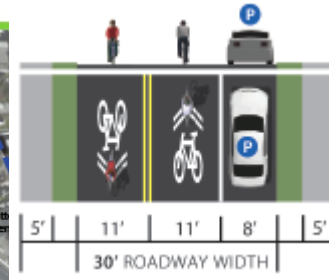
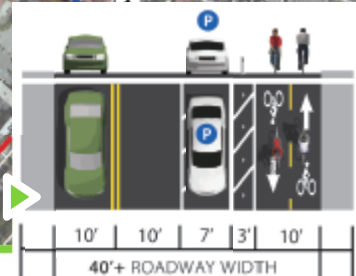
Broadway West



Hub and Cornell
Street Park



Broadway East



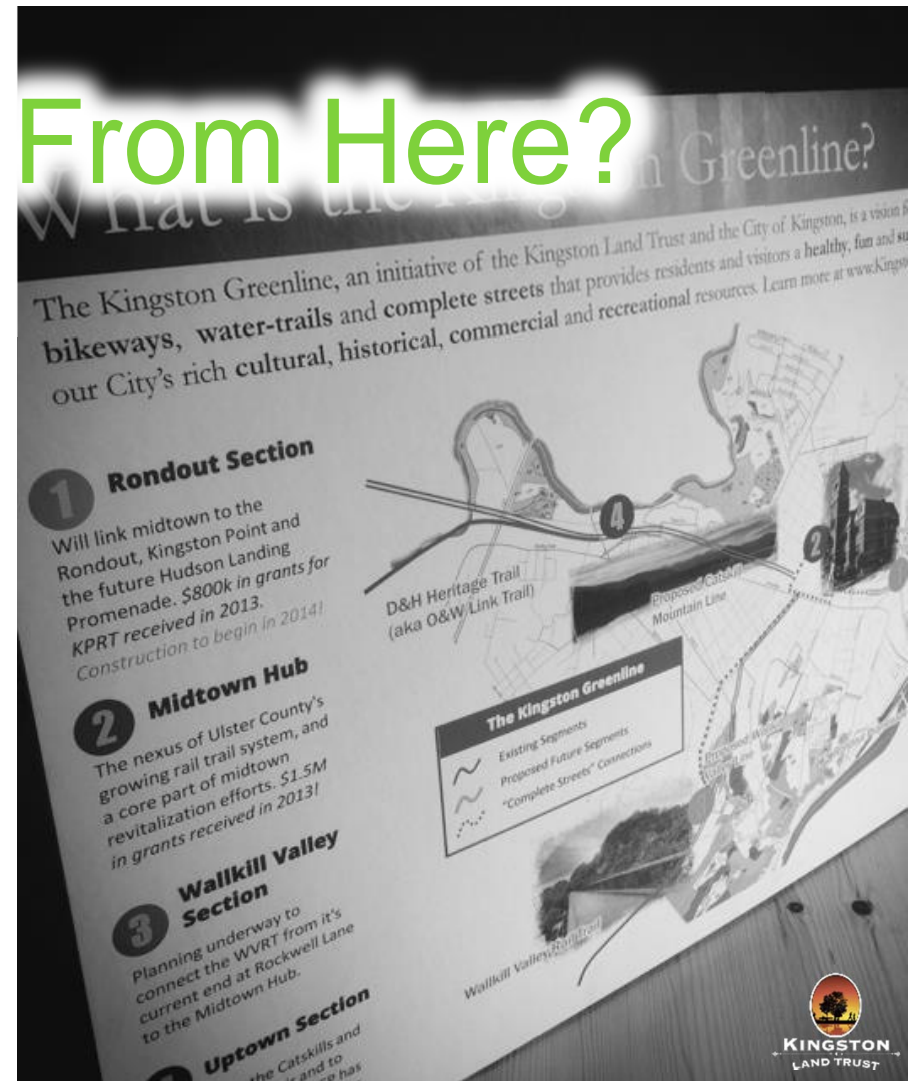
KPRT &
Rondout



Wallkill Valley Rail Trail

Where Do We Go From Here?

- > **Advocacy and Engagement**
Coalition-building, neighborhood outreach, growing the grassroots...
- > **Corridor Development**
WVRT extension to midtown, CMRT, O&W Connector, Hudson Landing Promenade
- > **Design and Construction**
City and KLT-led design process, KPRT construction, B'way signals & enhancements
- > **Maintenance and Management**
Comprehensive management plan, organizational development, fundraising



Volunteers doing some "heavy lifting" on the Kingston Point Rail Trail in 2013

Join the Movement!

- > Help us connect with community leaders and future trail user groups
- > Help us refine our messages about the benefits of the Greenline
- > Sign up for notices and announcements
www.KingstonGreenline.org
- > Come to the conference this Friday
www.ActiveTransportationUlster.org
- > Contact me for more info
Tim Weidemann
tim@rondoutconsulting.com

Together, let's build these trails!



KINGSTON
LAND TRUST