



**SCENIC
HUDSON**

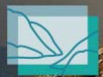
land ■ parks ■ advocacy

Farmland Protection
a key part of the puzzle for healthy, local food

Cari Watkins-Bates

Our Mission:

Scenic Hudson is dedicated to protecting and restoring the Hudson River, its riverfront and the majestic vistas and working landscapes beyond as an irreplaceable national treasure for America and a vital resource for residents and visitors.



**SCENIC
HUDSON**

land ■ parks ■ advocacy

LAUNCHING THE MODERN ENVIRONMENTAL MOVEMENT: 1963 campaign to save Storm King mountain

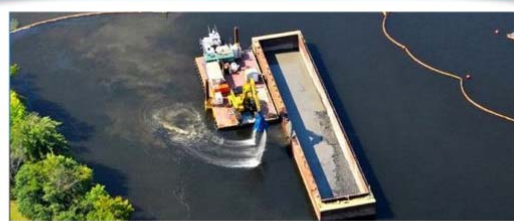


SCENIC HUDSON
land ■ parks ■ advocacy

SAVING THE LAND THAT MATTERS MOST

ENVIRONMENTAL ADVOCACY: Protecting our Shared Legacy

- ▶ power transmission line proposals
- ▶ PCB cleanup
- ▶ crude oil transport
- ▶ Rockland desal plant
- ▶ LG headquarters proposal
- ▶ Pilgrim pipeline proposal



SCENIC HUDSON
land ■ parks ■ advocacy



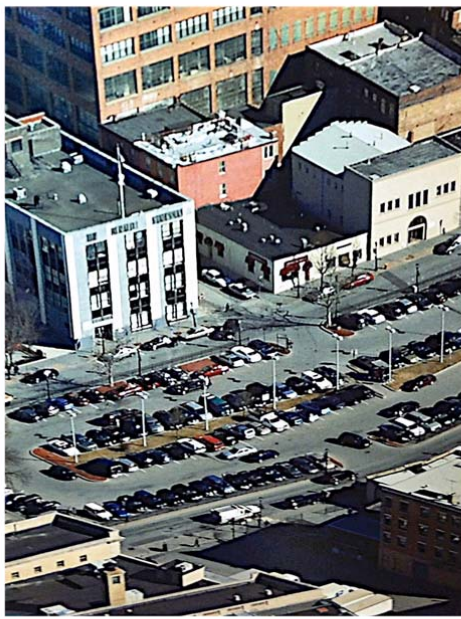
Scenic Hudson's Long Dock Park, Beacon



**SCENIC
HUDSON**

land ■ parks ■ advocacy

Transforming Waterfronts
Catalyst for Revitalization



Van Der Donck Park at
Larkin Plaza, Yonkers



**SCENIC
HUDSON**

land ■ parks ■ advocacy

Transforming Waterfronts
Catalyst for Revitalization

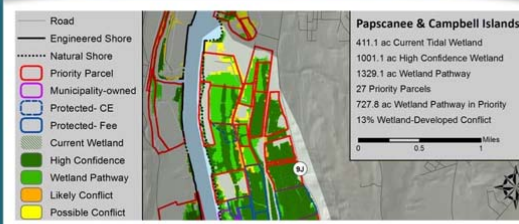
Conservation Science

- ▶ helping communities mitigate and adapt to climate change with custom maps and data
- ▶ protecting wildlife habitat through rich GIS analysis
- ▶ Hudson Valley Regional Conservation Plan models 11-county area to define land protection priorities

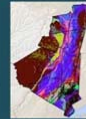


SCENIC HUDSON

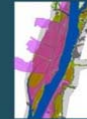
land ■ parks ■ advocacy



TARGETS:



ELUs
25-80%



Future Tidal Zones
75-100%



Corridors
50-75%



Habitat Cores
50%

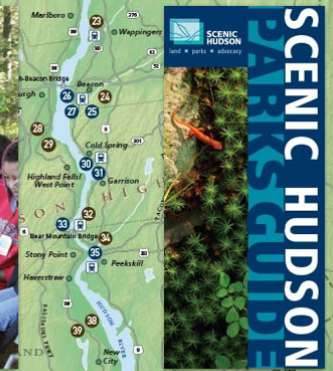
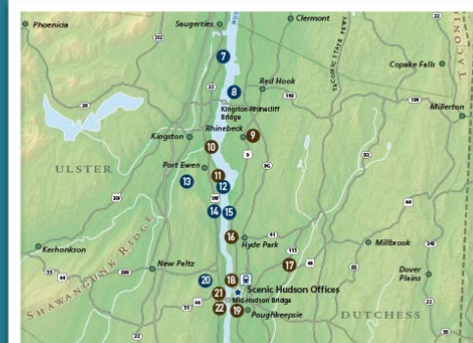
Parks and Environmental Education

- ▶ Scenic Hudson has created or enhanced more than 50 publicly accessible properties
 - parks
 - preserves
 - historic sites
- ▶ Scenic Hudson education programs are inspiring the next generation of environmental leaders



SCENIC HUDSON

land ■ parks ■ advocacy





**SCENIC
HUDSON**

land ■ parks ■ advocacy

GROWING RESOURCES FOR FARMLAND CONSERVATION FUNDING:

Conserving the NYC/Hudson Valley Foodshed

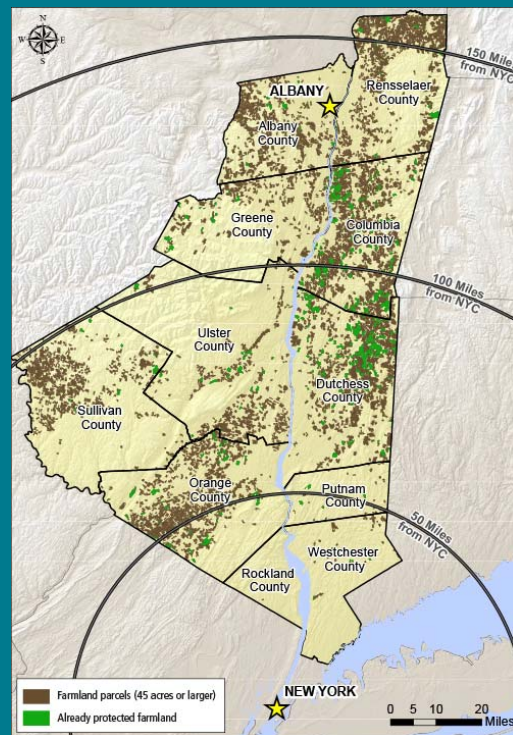
HUDSON VALLEY FARMS: Data from the 2012 USDA Agricultural Census

- ▶ 4,125 farms
(6% decline from 2002)
- ▶ 630,300 acres
(25% decline from 2002)
- ▶ market value of products
sold is \$434 million
(17% increase from 2002)
- ▶ Average farmer is 58
years old



**SCENIC
HUDSON**

land ■ parks ■ advocacy



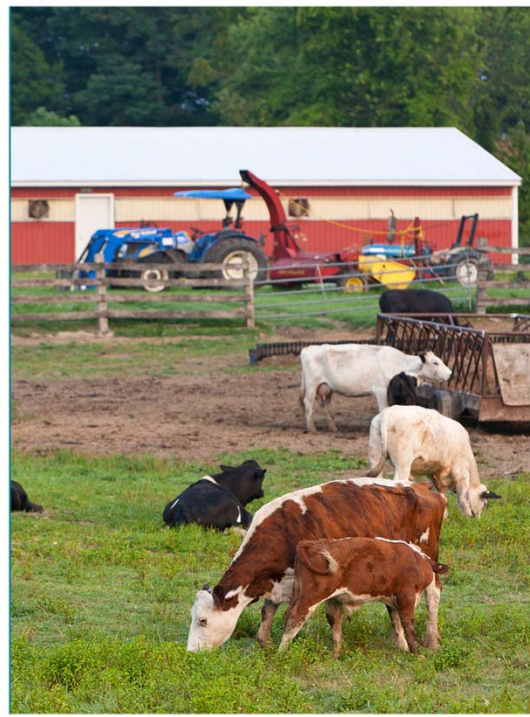
CHALLENGES FACING AGRICULTURE in the HUDSON VALLEY

- economic sustainability
- generational transition
- affordable access to farmland
- funding for PDR



**SCENIC
HUDSON**

land ■ parks ■ advocacy



PURCHASE OF DEVELOPMENT RIGHTS: Potent Tool to Strengthen Economic Viability

- more affordable land access
- increased supply & productivity
- facilitates family transition
- builds economic stability
- enables farm expansion



**SCENIC
HUDSON**

land ■ parks ■ advocacy



CONSERVED FARMLAND: Cornerstone of a Sustainable Regional Food System

- ▶ support local production through procurement
- ▶ invest in food distribution infrastructure
- ▶ CONSERVE REGIONAL FOODSHED



**SCENIC
HUDSON**

land ■ parks ■ advocacy

Elements of a Sustainable Regional Food System



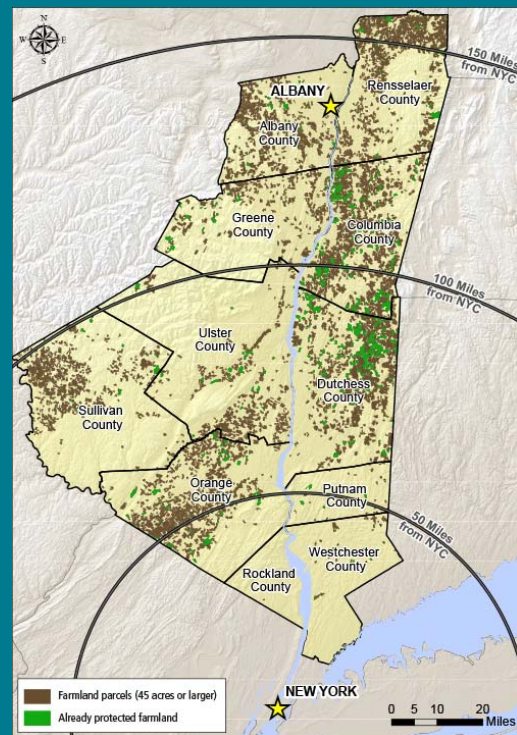
HUDSON VALLEY FARMS: Protected farmland

- ▶ 83,000+ acres
- ▶ Approximately 11% of all farmland



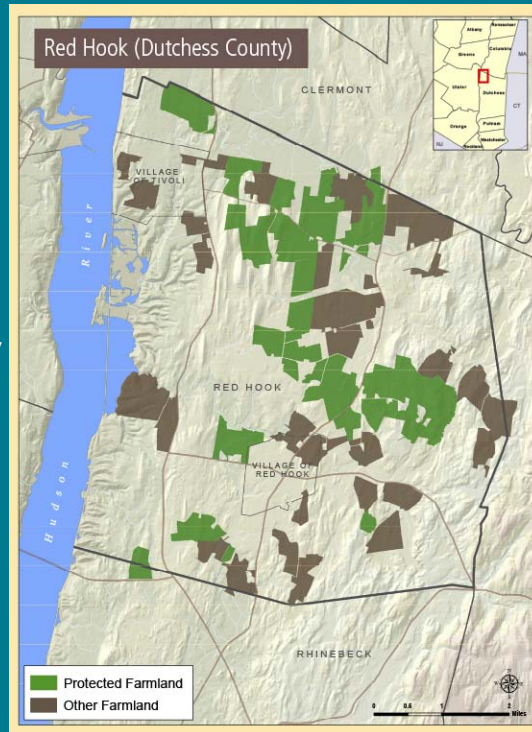
**SCENIC
HUDSON**

land ■ parks ■ advocacy



SCENIC HUDSON'S ROLE: 17 Years of Farmland Preservation

- “critical mass” builds resilient farm communities
- 13,500+ acres conserved on 100 farms in 5 counties
- \$43+ million delivered directly to farmers
- \$19+ million leveraged
- partners six other land trusts
- helps farmers sustain/expand
- access to affordable land



food•shed | \ˈfud-ˌshed\

1 (noun) the geographic region that produces the food for a particular population

SETTING REGIONAL PRIORITIES:

Creating a “Foodshed Conservation Plan”

- › \$600+ million of unmet demand
- › Public policies support farmland conservation
- › Conservation groups and farmers working together
- › However, no comprehensive plan exists to conserve agricultural lands in the foodshed



SCENIC HUDSON

land ■ parks ■ advocacy



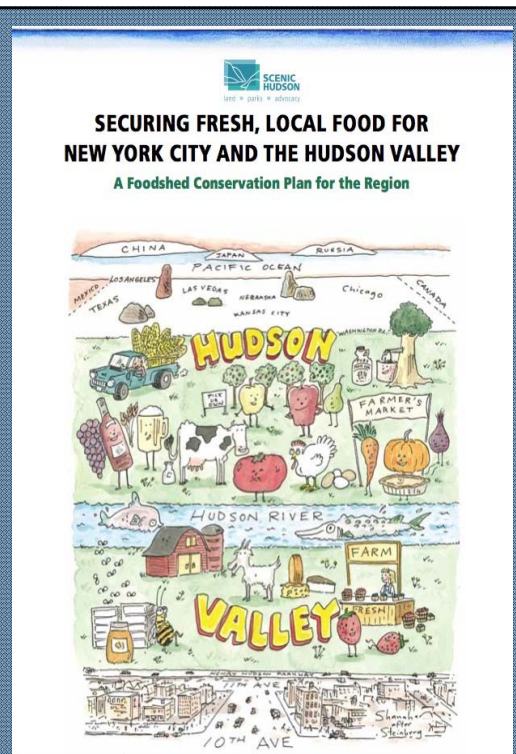
SECURING FRESH, LOCAL FOOD FOR THE HUDSON VALLEY AND NEW YORK CITY:

Identify and Conserve the Productive Farms that Supply the Region’s Farm Markets, Groceries, Schools and Restaurants.



SCENIC HUDSON

land ■ parks ■ advocacy



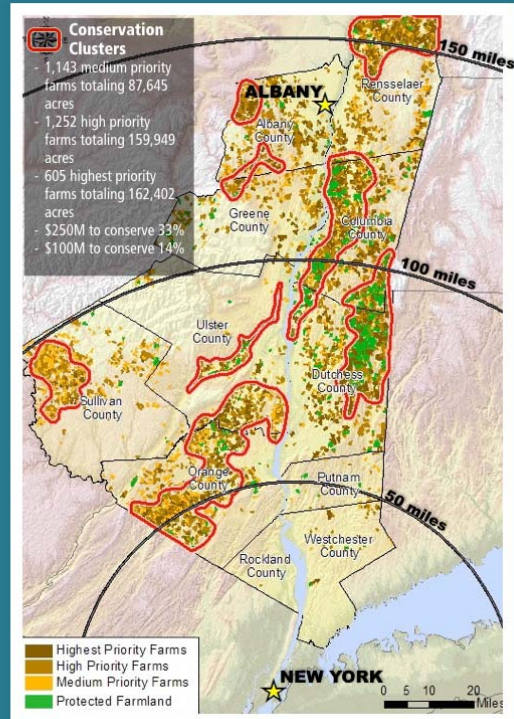
STRATEGIC PLAN TO CONSERVE THE FOODSHED

- ▶ foodshed plan offers strategic framework
- ▶ land trusts deliver turn-key deals
- ▶ cost reasonable
- ▶ farmers motivated



SCENIC HUDSON

land ■ parks ■ advocacy



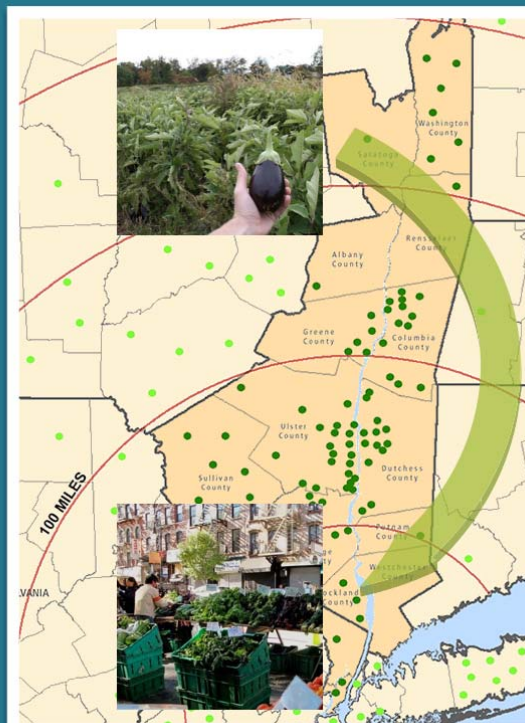
Conserving the Farms that Supply Our Farm Markets, Groceries, Schools and Restaurants

- ▶ New York City could access 30% of its food from within 100 miles
- Zumkehr and Campbell, U.C. Merced, 2015



SCENIC HUDSON

land ■ parks ■ advocacy



THE TIME IS RIGHT: New Yorkers Are Demanding More Fresh, Local Food

- ▶ \$866 million+/year unmet demand
- ▶ public schools need healthier food
- ▶ under-resourced communities deserve access
- ▶ drives culinary culture/economy
- ▶ diversification builds resiliency



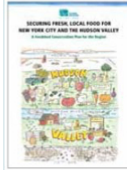
**SCENIC
HUDSON**

land ■ parks ■ advocacy



Local Food Pathways

HOW HUDSON VALLEY FOOD REACHES
NEW YORK CITY NEIGHBORHOODS



Local food reaches New York City in many ways. Urban farms and gardens provide some fresh produce, but the majority of local food comes to New Yorkers from nearby farms. NYC's farmers markets and farm-to-table restaurants are a familiar sight, and local food is increasingly acquired through Community Supported Agriculture (CSA) programs, food pantries, community



**SCENIC
HUDSON**

land ■ parks ■ advocacy

QUESTIONS AND ANSWERS

cwatkins@scenichudson.org or 845 473 4440 x268